



RICHMOND
ART SOCIETY

NEWSLETTER

Winter Exhibition

Caroline Sayer

Our Winter Exhibition at the Landmark Arts Centre in Teddington took place on Friday 29th and Saturday 30th November, with the Private View on Thursday 27th November. It was our biggest exhibition to date, with 75 artists taking part and over 350 works on display.

We did a leaflet distribution of 12,000 in the local area, an insert and editorial in the Arts Richmond newsletter, and an advert and editorial in the Twickenham, Hampton and Teddington editions of TW magazines, plus posters on lampposts on Teddington High Street. We also did a big push with social media thanks to Kate Strupinski, all of which resulted in lots of visitors - 660 visitors over the two days - and just under £6,000 in sales - including some 300 cards sold!

We ask visitors to vote for their favourite work in the exhibition. With more than 350 works, we had 162 votes split between 50 or so works. We do not expect any work to get more than 8-9 votes, and we decided to only accept votes that included the voter's email address (there were some irregularities with the public vote this time, which means we will have to rethink whether we run this at all next year.)

The winner with 7 votes was Laura Diaferio with 'Youth - A State of Mind'.

The Summer Exhibition 2025 will also be at the Landmark Arts Centre, with handing in day Thursday 19th June, and the exhibition open from Friday 20th to Sunday 22nd June. More details to follow.



Mali

Many of the RAS exhibiting artists take part in other exhibitions and when there is a private view the artist Mali can often be spotted amongst the visitors. Mali who recently celebrated his 90th birthday, really enjoys private views and was seen with us on the 27th.



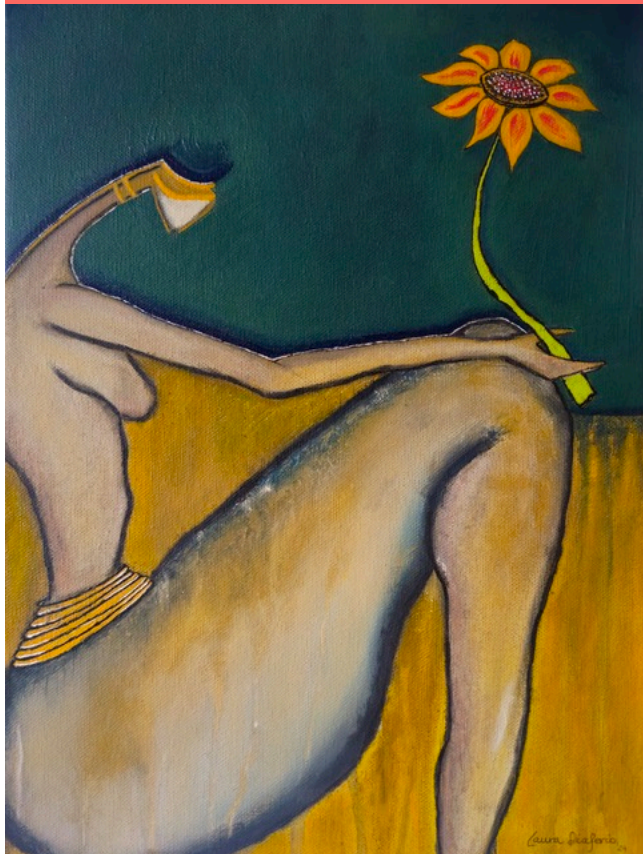
Cafe

Sue Ribbans is proposing that our next Exhibition in June has a more lively staffed cafe. A cup of tea/ coffee and a piece of cake to encourage visitors to linger a while and contemplate the superb artworks. Sue will head a small team to enable this and if you would like to be part of this venture please contact her sue@sueribbans.co.uk.



Winter Exhibition continued

The picture 'Youth A State of Mind' got the highest number of votes from the visitors to our exhibition as their favourite art work. A £50 prize has been sent to Laura Diaferio.



Nora Raufast

We think Nora was one of our oldest exhibiting members. She died on 1 May 2025 at the age of 102. We hope to put some of her paintings in the next exhibition which will be sold in aid of Médecins Sans Frontières.



RAS Lecture Programme 2025

All lectures will be held, at 19.30, in the Duke Street Church Hall (side entrance in Quadrant Road) except for January which will be on Zoom. Here are the dates for your diary and we look forward to seeing you soon. Sally and Jill

19th February	Dora Carrington: The Tragic Muse of Bloomsbury Lecturer: Alan Read Pallant House Gallery 9th November 2024 - 27th April 2025
19th March	Siena: The Rise of Painting 1300 - 1350 Lecturer: Clare Ford Wille National Gallery: 8th March - 22nd June 2025
16th April	Brasil Brasil! The Birth of Modernism Lecturer: Cindy Polemis Royal Academy: 28th January - 21st April 2025
21st May	Tirzah Garwood: Beyond Ravilious Lecturer and curator of this exhibition: James Russell Dulwich Picture Gallery: 24th November 2024 - 26th May 2025
18th June	Anselm Kiefer: Coming to terms with the past Lecturer: Tom Parsons Ashmolean: 14th February - 15th June 2025

Richmond Art Prize

The society is delighted to announce the launch of a new prize for visual art that celebrates the borough of Richmond upon Thames. The prize is open to all artists in and around the borough. The work can be anything or anyone representing aspects of life there.

The judges will assess works on how well they meet three fundamental principles: how well they have observed the world around them; how well they have used creativity to bring their ideas to life; and how well their artwork has inspired, elevated, and impacted others, especially, how well it fosters a connection between diverse groups.

The judging panel comprises:

- **Gareth Roberts** - leader of Richmond Council and London Assembly member
- **Francis Bowyer PPRWS NEAC** - distinguished artist living in Barnes
- **Sally Ward** - finalist in Sky Arts Portrait Artist of the Year
- **Ian Sidaway RI** - renowned watercolour artist
- **John Iddon** - President of Richmond Art Society and fine art dealer

Submissions will open at the end of January 2025 and winners will be announced in the weeks leading up to the Society's Summer Exhibition in June. Winning works will be exhibited, and prizes awarded, at the Exhibition. Sign up to the mailing list on the website for announcements.

We look forward to seeing your work. Rue Turner, Chair

Website: <https://www.richmondartprize.com>. **Instagram/Facebook:** @richmondartprize



Plein-air

Hugh Dalzell

The big question may be "What is Art?" but lower down the list is "What's the point of painting en plein air?" Leaving aside dozens of utterly motivating answers, one dramatic illustration recently unfolded in the River, between Marble Hill House and Glover's Island.

The Heath Robinson, jerry built assemblage of oil drums, old hulls, driftwood, davits, nets and tarpaulins known as Ian's Raft is gone for ever. An eyesore for some and an absorbing landmark for others such as me. Following Ian's sad death, it has been removed by the heavy plant and machinery of the Port of London Authority .

Sudden change can make us realise how important was something or someone we had taken almost for granted. An aspect of en plein air is to recognise the significant before the change, inspiring the creation of a record, an interpretation and an emotional response.

Much tougher to do from memory . And who says there will be any warning?

I am very sorry that Ian's Raft is no more. It had been there for ages, surviving winds, fire and water. This time I was lucky and finished my painting before its disposal.

So, seize the day. Do come and join us.

The WhatsApp plein-air group meets on Tuesday mornings from mid March until the end of July and resumes on the 18th March 2025 at Tide Tables Café, Richmond Bridge and will run until the end of October with a break during the Summer. There is a different venue every week. If you would like more information or would like to join the group and are on WhatsApp, email the RAS or hugh@dalzell.info and include your mobile number. We're looking forward to seeing you.



Ian's Raft, Oil, Hugh Dalzell



Plein air continued



Members News

Agnieszka Lokja has been chosen to take part in Re:Create Richmond! This innovative business support programme has been specifically designed to boost the creative industries in the London borough of Richmond Upon Thames. As a member of this year's cohort, she will receive tailored mentoring and training from experts in the creative sector, to help build an even stronger and more sustainable creative business.

Upcoming shows:

- 9 Jan - 8 Feb 2025 Friends 2025 Exhibition, [Royal Birmingham Society of Artists](#)
- [Art Surrey](#), March 2025

Current exhibitions:

- 21 Nov - 24 Jan 2025: Christmas at [The Beach Gallery](#)
- 14 Dec 2024 - 1 March 2025: Winter Group Exhibition, [AKA Fine Art](#)
- 1-31 Dec: [BobCat Gallery](#), Putney

Doina Moss is part of a group exhibition at The Beach in Teddington until 24th January.

CHRISTMAS @ THE BEACH
 21 November 2024 - 24 January 2025

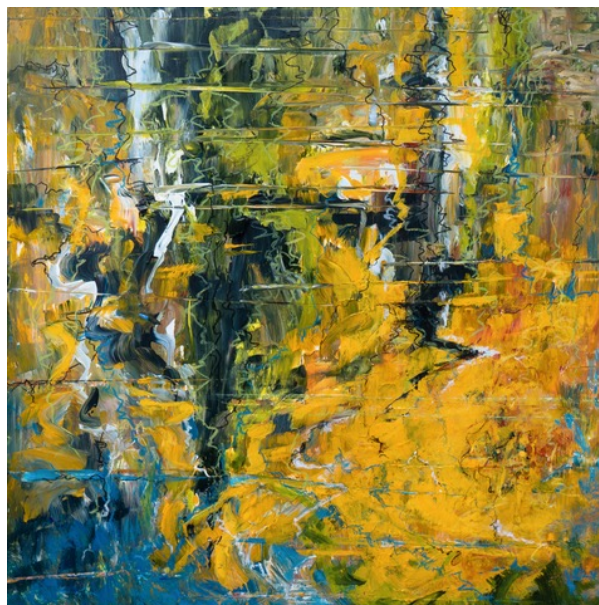
Sophie Coe
 Tess Gartland-Jones
 Mark Owen
 Mary Burtenshaw
 Stuart Story
 Roz Fletcher
 Mary Hayward-Smith
 Camela Kantorowicz
 Doina Moss
 Agnieszka Lokaj
 Adelaide Herron-Vellacott

THE BEACH – 197 WALDEGRAVE RD, TW11 8LX
www.the-beach.uk
 IG @the_beach_197 - FB the.beach.gallery

Laura Parker is thrilled to have her artwork "Now Spring Has Come, No One Knows How" accepted for this year's Winter Show at **Orleans House Gallery**, a group exhibition featuring local artists in the Stables Gallery.

The exhibition is on until 2 February 2025, and open Tuesday to Sunday, 10am to 5pm, entry is free).

BobCat Gallery will host an exhibition of original artworks to bring light to the darkest time of the year. Bright, bold and beautiful artwork will help to banish the January blues, and Laura had a number of paintings included in this vibrant exhibition. The show is on from 7 to 30 January. The gallery is open 10.30 to 6.30 Tuesday to Saturday, upstairs at Putney Exchange Shopping Centre.



Now Spring Has Come, No One Knows How, Oil, Laura Parker



Jan Johnson has paintings and prints selected for the EXi show at the **Crypt gallery** in Marylebone.

The PV is 20 Feb. 2025. Members welcome

Classes

Jan Johnson has watercolour classes at ETNA centre. Tuesday pm. 1-4.

Lovely space, advanced and learners welcome, established create committed and sociable group of artists. New techniques explored. Reasonable fees. Email janleejohnson@me.com. Starting January.

ETNA Centre, 13 Rosslyn Road, East twickenham TW1 2AR

It's very close to Richmond and has a small car park at the rear.



RAS members **Jim Woodman** and **Anne Swankie**, together with other artists, will be exhibiting at the **Fresh Art Fairs** to be held at Alexandra Palace, 31st January to 2nd February, and at Cheltenham Race Course, 4th to 6th April. To obtain complimentary tickets for either fair please contact Jim Woodman.

*It's just the way it changes,
Oil, Jim Woodman*

Jo Ellis will be showing works at **Fresh Art Fair** Alexandra Palace 31 January to 2 February 2025.



*'Flowers for My Love'
Mixed media on canvas Jo Ellis*

Nataliya Zozula organised and curated an exhibition **Winter Tales** in the **Rose Theatre**, Kingston. 12 November – 4 January



Ruth Munby is exhibiting in the **Law Society's annual art exhibition** which is to be held next year at Lauderdale House, Waterlow Park, Highgate Hill N6 5HG from Wednesday 30 April to Monday 26 May 2025.

Please check opening hours via www.lauderdalehouse.org.uk or ring 0208 348 8716.

Private view 7.30-9.30pm Wednesday 30 April. New members are very welcome.

Membership is open to people connected to the legal profession and their close relatives.

www.lawsocietysartgroup.co.uk