



RICHMOND
ART SOCIETY

NEWSLETTER

Summer Exhibition

Caroline Sayer

Our Summer Exhibition took place at the Landmark Arts Centre in Teddington from Friday 27th - Sunday 29th June, with the Opening Evening on Thursday 26th June.

It was particularly well-attended with more than 720 visitors over the weekend. More than 75 artists took part in the Summer Exhibition and we had more than 300 paintings, sculptures, ceramics and photographs on display.

We took over £6,200 in art sales, with 30 works and over 300 cards sold - not bad considering the current economic climate!

The public's favourite work (as voted for by visitors) was Sophie Coe's 'Riverside' (below) and she was awarded the prize of £50.



The next exhibition is our winter show, which will be from Friday 28th - Sunday 30th November; exhibition open from 2pm Friday afternoon, with Opening Evening 6-8pm.



A report from Sue Forster our treasurer

We had around 300 pieces of artwork, of which we sold:

- 17 wall hung works**
- 10 browser items**
- 3 other artworks (ceramics)**

This raised £5,300 in total.

On top of this we had 860 greetings cards on sale and sold **310** of them, raising a further £905.

A note to future exhibitors. Several artists did not collect their work at the end of this exhibition and did not let us know in advance they were not collecting. One artist left her very large works at the Landmark for more than a week - which is unacceptable, both for us and for the Landmark. **In future, if we are not told you can't collect on the last day, we will take work away with us and impose a fine of £25 per artwork, before they are released.**

Thank you Jean!

Our exhibiting artists will have noticed that our applications to exhibit have altered and it's all now done online. Previously we would have sent our paper forms and cheques off to Jean Chippendale who would have processed everything, deciphered difficult handwriting, chased up queries and payments, typed up the entries and produced a splendid catalogue. Jean did this for many years and we would like to say a big thank you to her for all the work she has done to make our exhibitions run so smoothly.

Richmond Art Prize

At the opening evening of another thriving summer exhibition we announced the winner of the inaugural Richmond Art Prize. Alison Headley's linocut print of Kew Gardens: 'Looking Out of the Palm House', was a worthy winner from among a strong group of finalists. It was great to see three of our esteemed judges there on the night. Thanks to Francis Bowyer PPRWS NEAC, Sally Ward, Ian Sidaway RI ASGFA, John Iddon, and Gareth Roberts for their support. The Prize will run again next year and finalists will be showcased at the 2026 Fabulous Summer Exhibition.

Congratulations to the 2025 Finalists:

- Alison Headley (winner)
- Andrew Hird
- Lyn Gray
- Peter Rossington
- Susannah Weiland
- Judith Brown



Running Refreshments

Sue Ribbans

When visiting the Landmark exhibitions it always seemed to be a good idea to have a cup of tea or coffee and a sit down to contemplate the wonders on display. Up to now this aspect of the Richmond Art Society show has been a bit lacking so I thought I would take it upon myself to rectify the situation.

The Landmark administration were fine with this but cake was discouraged. Something to do with risk assessment? It was decided that there would be no charge for refreshments but there would

be a donations box on the counter for the Princess Alice Hospice.

Tea, coffee, milk and cordial were purchased locally and a selection of biscuits. I didnt know that chocolate digestive biscuits now came in a pink variety which became melted and sticky in the heat we were experiencing that weekend.

I had my handy Sumup machine with me as I was aware that nowadays people don't carry cash with them. I found it a very sociable and enjoyable experience, well worth doing. Customers were extremely generous and were able to send **£229** to the Princess Alice Hospice.

Midsummer Party

It was wonderful to see so many members come together and chat about all things art. Many thanks to **Nataliya Zozulya** for arranging the delicious snacks and drinks, which were devoured and quaffed by about 40 guests. I also wanted to thank our president, **John Iddon**, for the use of his beautiful garden and for his engaging art and literature-themed puzzles - a bottle of prosecco went to the lucky winner!



Lecture Program -

Jill Butts

After a highly successful series of art lectures over the past few months which saw our audience numbers grow substantially, we are eagerly looking forward to the remainder of the 2025 - 2026 lectures. These will start on 17 September with a talk on **Millet**, currently showing at the National Gallery; it will be delivered by Dr Kathy McLauchlan. This will be followed by 3 new subject areas for RAS along with 3 new lecturers; all being well respected in their field of art.

The **Mrinalini Mukherjee** exhibition (Royal Academy) lecture is eagerly anticipated, followed by a talk on **Hodgkin** at the local Pitzhanger gallery and in December we welcome one of the Hayward Gallery's curators speaking to us on **George & Gilbert**. Post Christmas, we have some further interesting topics: **the art market** delivered by experts from the Courtauld; Anna Ancher (by the curator from Dulwich Gallery) and, a totally new area for us, **Nigerian Modernism**. All these lectures should challenge and broaden our knowledge of art.

Thoughts

Chairman, Rue Turner

There have been many days this year when the weather in the borough has been ideal for plein-air. Working outside can give another perspective, and I'd encourage anyone to take the opportunity to add this to their practice. Drawing and painting from life is the foundation of truly understanding the subject. I'll admit to feeling the pressure of others looking over my shoulder at unfinished work, but plein-air can bring your work to life and the general public are typically kind and considerate.

I'm making some improvements to my studio (read: converted garage with boiler) and I'm sorting through old work to make space. As I go through the pieces, I can see clearly what I couldn't before. Comparing where we are now to where we have come from is the most useful comparison we can make. We are bombarded with images of what others are doing and achieving, but the real insight comes from where we've grown ourselves. Where are you on your personal creative journey? Where have you developed? Where do you want to grow? The big revelations can be inspiring, but the small iterative improvements continue to enrich our creative lives.

Plein Air

Emma Pilkington

I wanted to say how much of a highlight the weekly plein aire sessions have become for me this year. **Hugh Dalzell** leads us and finds wonderful locations and excellent directions including tidal and weather reports. We are an informal, friendly and cheerful bunch often beginning and ending the sessions in a cafe. I would thoroughly recommend the group to anyone with an interest and some materials to join us.



Members News



Teddington Artists Contemporary Art Fair.
 September 6 & 7th, Saturday 10-6 Sunday 11-4
 Awesome Studios 23 High Street
 Teddington. TW11 8ET
 Entry £3

Diane Gerrard

Curating and showing in group exhibition titled **Truth and Lies** at The Handbag Factory dates November 19 to December 2nd, 2025

dianegerrard.com

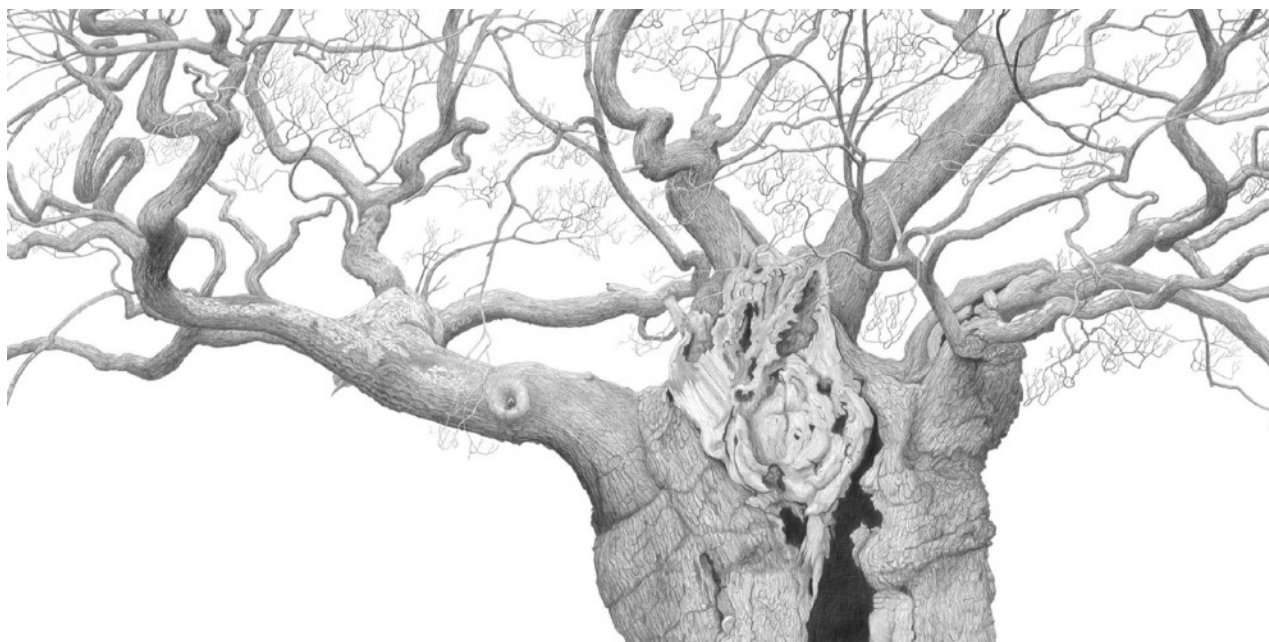
[Instagram.com/dianegerrardstudio](https://www.instagram.com/dianegerrardstudio)

07941976543

Richmond Park, Ways of Seeing - Trees in British Art History

Free event by the Friends of Richmond Park.
 7.30pm, 22 September 2025, Duke Street
 Church Auditorium, Richmond, TW9 1DH.
 In person or live streamed.

Enrich your experience on future visits to Richmond Park, a top UK site for ancient trees, as artist Tim Craven, founder of the tree artists group, The Arborealists, explores the history of how British artists have seen trees. More information and book at treesinart.eventbrite.co.uk



Sophia Cole

Charcoal workshop:

I'm now teaching workshops in Twickenham: The first date being a charcoal workshop on Saturday 6th September. Info in the flyer, Booking is through this link: <https://sophiecoe.com/workshops/p/charcoal-workshop>

Sophia is showing at the **Summer exhibition** at The Gallery at Green and Stone, Fulham Rd, Chelsea. 28 July - 28 August. I'm exhibiting the drawing titled 'In to the Clouds' Charcoal on paper, 84 x 59cm

Ealing Art Trail

Maria Murtagh

Come and visit us at: Venue 41
7 Graham Avenue, Ealing W13 9TQ
Saturday and Sunday 11am to 6pm 6/7 & 13/14 September 2025

Borough of Ealing Art Trail 2025

Maria Murtagh and Jim Williamson welcome you to our 2025 exhibition and sale of hand thrown stoneware ceramics, original artworks, prints and sculptural pieces.







www.thelittlepotter.co.uk

Come and visit us at:
Venue 41
7 Graham Avenue, Ealing W13 9TQ
Saturday and Sunday
11am to 6pm
6/7 & 13/14 September 2025



www.ealingbeat.org.uk



Busy Blue

Liz Mundle has had two pieces of work chosen by No Place Art for their exhibition '**Materiality**' to be held at the Handbag Factory from 25th - 29th September.

Now Sp
Oil, Laur



Jim Woodman has a solo exhibition at Gallery An Talla Dearg on the Isle of Skye until the 13th August and will be showing at the Edinburgh Art Fair from the 18th to the 21st of September.

Laura Parker is delighted that "Out of the Stillness" has been chosen to be part of The Horton 's Summer Exhibition.

the HORTON
Exhibition

SUMMER EXHIBITION

The Music of Life

1st - 26th August 2025

An eclectic mix of work by established artists alongside emerging talent from Surrey. Exhibiting in The Horton's amazing Grade II listed gallery space. The theme pays tribute to The Horton's extraordinary legacy as Europe's first centre for music therapy.

Opening hours:
Monday to Friday: 11am to 6pm
Friday: 10am to 6pm
Saturday: 11am to 5pm
Sunday: 11am to 5pm

thehortonpsom.org
01372 747 662

Facebook: [thehortonpsom](#)
Twitter: [thehortonpsom](#)
Instagram: [thehortonpsom](#)



Presented by
PEACOCK & CO
Artists' Forum

Organised by
THE HORTON
PSOM

Loraine Monk has a two Prints in the Royal Society of Painter-Printmakers exhibition: **Small But Mighty** at Bankside, London from Thursday 18 - Sunday 28 September 11am - 6pm daily. Private View Wednesday 17 September, 6 - 8pm

Loraine also has two Prints in the South Bank Printmakers **Mini Print Exhibition** at Southbank Printmakers Gallery, Gabriel's Wharf, London, SE1 9PP. Opens Tuesday 30th September - Sunday 30th November. Private View - Friday 3 October 6-8pm



After the Flood



Squirrel



The Reckoning

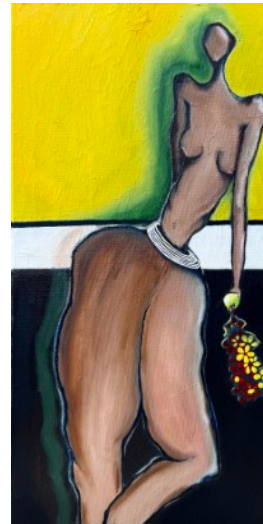
Agnieszka Lokaj

Join us this September for **Touchlines of Fortitude** – a bold, empowering exhibition celebrating female resilience through the powerful intersection of art, sport and storytelling.

Touchlines of Fortitude at The Beach Gallery, Waldegrave Road, Teddington
11 September - 5 October 2025

Free Entry | Drop-In Anytime

See more info: <https://www.fortitude-touchlines.com/lead-artists>



Soraya



Folding in a Secret



Indie

Laura Diaferio

My paintings explore the female body through expressive abstraction, often reflecting inner emotional states, memory, and subjectivity. Coming from a background in psychology, I use the figure as a vehicle for examining themes of perception and identity.