



RICHMOND
ART SOCIETY

NEWSLETTER

Winter Exhibition 2025

Friday 28th - Sunday 30th November

Caroline Sayer

Our Winter Exhibition 2025, held at the Landmark Arts Centre in Teddington in late November, opened on Friday afternoon, with a well attended Private View in the evening. We had nearly 60 artists taking part, and over 220 pictures and sculptures on display, which were all up and labelled thanks to the hard work of our volunteer receiving and hanging team, ready for the exhibition opening at 2pm on Friday afternoon.

Marketing for the exhibition included a leaflet distribution of over 22,000 to all Teddington TW11 and Twickenham TW1 households, editorial and an image in the local TW magazines, in the Landmark's website and listings, leaflet insert and editorial within the Arts Richmond newsletter, posters and leaflets to local libraries, posters on the lampposts along Teddington High Street, in local shops in Teddington and Richmond, local news websites, etc, etc. There were also regular postings on the RAS's social media accounts in the lead-up to the exhibition.

Many thanks to everyone involved in helping with the publicity, especially to Evgenia Osmani who creates all the designs for our posters and leaflets.

It was a well attended exhibition, with nearly 750 visitors over the 2.5 days. We ran the Landmark cafe throughout the exhibition with tea, coffee and biscuits on offer for a donation to charity. £140 was raised for Princess Alice Hospice.

Sales were down on last year's winter exhibition (the economic climate and recent budget no doubt playing a part). Card sales were excellent though with 300 sold!



Our next exhibition will be the Summer Exhibition. The dates are: handing in morning Thursday 11th June, closing date Sunday 14th June, Private View Thursday evening. Further information nearer the time, but registrations will continue to be entirely online.

Message from the Chair - Rue Turner

In 2026, we have much to look forward to at the Richmond Art Society. Our strength has always been the breadth of our membership: artists working across every medium and discipline, as well as thoughtful connoisseurs. This year promises a rich programme—opportunities to show work, discover new artists, and attend more of our fascinating lectures. Whether you're in the studio or visiting galleries, your active engagement is what makes you a part of the rich cultural tradition in our borough. Here's to another year of creativity, inspiration and good company, and to keeping the visual arts alive and well in Richmond.



Lecture news

Please go to our website for news about our Lecture Programme.

Richmond Art Prize 2026 In its inaugural year in 2025, the Prize gave exposure to wonderful artists from across the borough and beyond. Congratulations again to Alison Headley, who won for her print of the Palm House at Kew Gardens. The Prize will run again in 2026 with an award of £250 for the winner.

Key dates

Submissions open on 1st February 2026 and close 22nd April 2026. Finalists will be announced on 21st May 2026 and the winner will be revealed at the opening of the Summer Exhibition 11th-14th June 2026.

More information: <https://www.richmondartprize.com>



Statistics of the Winter Exhibition

supplied by Sue Forster

The details are:

No. of Sculpture & Ceramic submitted - 21 by 6 artists
 No. of Browser items submitted - 84 by 30 artists
 No. Wall Display items submitted - 200 by 56 artists

No. sold:

Sculpture & Ceramic - 2
 Browser items - 12
 Wall display items - 10
 Total sales £3,170

Cards

Received - 742
 Sold - 300
 Total sales - £903



Our Chairman Rue says

"We are currently looking for a Secretary for the society. This is a committee member position who would take responsibility for the admin of the meetings and take a role in communicating with the membership. It is not a particularly onerous role but it is vital and important.

I'm currently doing it myself alongside the other three roles that I do so it would be nice to find someone sensible and reliable to take that part on."

Many thanks Rue Turner

+44 7739551776

rue@rue.uk rue.uk rue.artist

En plein Air

Hugh Dalzell January 2026

Tempted by our adopted mantra "come rain or shine" and the enthusiasm of some members to continue as a group over the winter, I have been weighing up whether to plan a frost bite extension for 2026/7. After all, the conditions with winter light, low sun, long shadows and reduced vegetation are...well...different. So I googled for tips for winter outdoor painting.



The suggested clothing had an arctic ring including base layers, fleeces and a windproof/waterproof outer shell. Hats, gloves, scarves, earmuffs, insulated boots and additional hand and toe warmers seemed essential with the addition of at least a thermos of hot drink, food and, top tip, newspaper or a mat to provide insulation from the ground. Sunglasses may be needed to counteract glare.

Conditions may require a strong wind strategy to reduce the risk of wind flipping over your easel or canvas (weights or guy ropes?), a rain strategy (but we are rather used to that anyway) and, as temperatures drop, a paint strategy. Acrylic paint may not cure properly as temperatures fall below 10°C and water colours will get tricky as temperatures plummet with prolonged drying time and, for really hardy folk, even freezing. Oil paint too is best kept warm (in a pocket?). Working fast reduces exposure to the elements and using a limited palette and a palette knife may help.

In the end, it seems that the advantages of choosing milder, drier and less windy days in winter (rather than every Tuesday) are, largely, self evident.

In conclusion, I am delighted to confirm that, this year the *en plein air* group plan is to resume at **10.30 am on 17 March at Tide Tables Café, Richmond Bridge** and to run until the end of October 2026 with a break during the summer. There is a different venue every week and the 2026 programme will be posted in February on WhatsApp. If you would like more information or would like to join the group and are on WhatsApp contact me through the RAS website or by email hugh@dalzell.info and please include your mobile number. We're looking forward to seeing you.

Members News

Liz Mundle

I have two mono prints in this exhibition - **Arts Richmond Winter Showcase**

The exhibition runs from 16th December 2025 until 20th February 2026

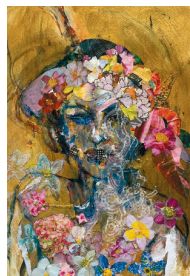
Appointments to view the exhibition will be managed by BobCat Gallery via contact@bobcatgallery.co.uk



Blurring Boundaries 14 - 26 April

Caroline Sayer, Rue Turner and Sue Ribbans will be exhibiting again at The Fountain Gallery in East Molesey

14 - 26 Apr



Caroline Sayer
Blurring Boundaries:
 Collages, prints, sculptures and fine landscape oil paintings in a collective show exploring the human-nature connection.

Exhibiting with:
Rue Turner
Sue Ribbans



Jo Ellis be showing work at the Fresh Art Fair at Alexandra Palace 30thJan - 1st Feb 2026. Represented by Francis Iles Gallery. Please use the link below to get free tickets: <http://www.eventbrite.co.uk/e/1963192494599/?discount=FrancisIles>

Debra Fendley

One of my screen prints (left) was selected as part of the Orleans House Winter Show. The call-out was for Richmond-based artists, there are 41 pieces of art - paintings, prints, sculpture, ceramics. The show will be running until 1 February 2026.

I have recently re-started print making at Richmond & Hillcroft Adult Community College (RHACC) to compliment my ceramics practice and produced this print there.

My print is called 'Sunset over Teddington Lock', My printmaking has developed around creating a new perspective of the places I have visited. I start with a photo which I deconstruct manually into layers (these are the print templates) which I then paint by hand. I love to experiment with unusual colour combinations to create the final screen print. I hope it allows the viewer to imagine familiar or new places in a brand new way. Here is the web link: <https://www.orleanshousegallery.org/events/winter-show-2025/>

Sue Ribbans has also a print in the Orleans Winter Show (above) a linocut Titled 'Run like the Wind'

“Our member **Ruth Munby** is taking part in the Law Society’s Art Group annual exhibition from Tuesday 12 to Saturday 16 May 2026 inclusive in the atrium of Richmond Adult and Community College, Parkshot, Richmond. You are cordially invited to the private view from 5.30 to 7.30pm on Tuesday 12 May. www.lawsocietysartgroup.co.uk



Sophie Cole is exhibiting at the Gallery at Green and Stone, Fulham in their ‘Works on Paper’ exhibition which is always a lovely exhibition of emerging artists. (Low tide, Hammersmith. Charcoal & ink on paper 76 x 56cm)



Jude Wild is very happy to be taking part in Visual Fictions together with 11 other artists. An exhibition celebrating the book in all its forms and taking place at Books on the Rise in Richmond.

VISUAL FICTIONS from Jan 6th - Jan 31st
Books on the Rise, 80 Hill Rise, Richmond
TW10 6UB

Jan Lee Johnson is designing the scenery for this year there’s a production of ‘Anne Boleyn’ by Howard Brenton by RRS (Richmond Shakespeare Company) at the Mary Wallace Theatre in Teddington.

richmondshakespeare.org.uk — Print

ANNE BOLEYN

by Howard Brenton

Directed by: David Gray

Saturday 18 to Saturday 25 April 2026

Captioned performance Thursday 23 April

Mary Wallace Theatre

The Bakery Gallery presents : The Cat Show: The Artist's Mew's The exhibition will be held in Central London at the Bakery Gallery's Camden Passage site, a short walk from Angel underground station (6 Charlton Place, N1 8AJ)

This show will bring together gallery artists, invited guests, for artwork inspired by the cat: as a muse, as a companion and friend, as a symbol of independence...

Exhibition Dates: February 3 - 15, 2026.

Private View: Thursday, February 5th 2026.

Finish: Sunday, Feb



THE DIANA ARMFIELD RA NEAC PRIZE FOR DRAWING FROM OBSERVATION.

THE PRIZE IS AWARDED IN MEMORY OF HER HUSBAND, BERNARD DUNSTAN RA.

"All professionals, amateurs and even those who say 'I can't draw a line' are welcome to submit their drawings!" DIANA ARMFIELD RA NEAC

All entrants must be 16 years or over.

A panel of judges will select the finalists.

Diana Armfield RA NEAC will select the winner herself.

Deadline for entries is Saturday 14th February.

All drawings must be brought to ETNA - Arts Richmond (Room 16), 13 Rosslyn Road, Twickenham, TW1 2AR between Monday 16th February to Saturday 25th February, from 9.30am to 12.30pm.

An exhibition will be held at The Patch Twickenham, TW1 3LJ, 2nd - 6th March 2026

Full terms and conditions : <https://artsrichmond.org.uk/>

All professionals, amateurs and even those who say 'I can't draw a line' are welcome to submit their drawings! DIANA ARMFIELD RA NEAC

All entries will be part of an exhibition to be held at The Patch York Street Twickenham in March 2026

Exhibiting at 'Button House'

Sue Ribbons, Friedel Buecking and Caroline Sayer all took part in Surrey Sculpture's exhibition at West Horsley Place in November, better known as 'Button House' in the BBC1 tv sitcom 'Ghosts'. It's a very atmospheric Grade I listed Tudor manor house, very much as it's seen in the sitcom. Behind the closed doors of the 'state' room where the sculptures were on display were some of the props used in the tv show, including the miniature dolls house used in the opening credits of the programme. There's also the original very old Tudor staircase leading down to the cellar where the plague victims spent their time. It's a great tv series if you haven't seen it and West Horsley Place is also open to the public and hosts Grange Park Opera in the grounds in the summer.



Jan Johnson

A Five Day Art Retreat in the seaside village of Cawsand, Cornwall is scheduled for 2026, from Friday June 19 - Wednesday June 24. The course proved extremely popular last year, so artist Jan Lee Johnson and printmaker Alexandra Robb have collaborated once more to provide a mixture of sketching, nature printing, watercolour and lino printing. All inspired by the coastal scenery, while staying at the well appointed Victorian villa with 14 bedrooms with a lovely artist workroom with sea views. The 5 night stay includes tuition, breakfast and evening meal and the price of £750 remains the same as last year.

Please contact Alex at alexandra.robb@gmail.com or www.janleejohnsonstudio.com for more information and photos from art retreat 2025.

